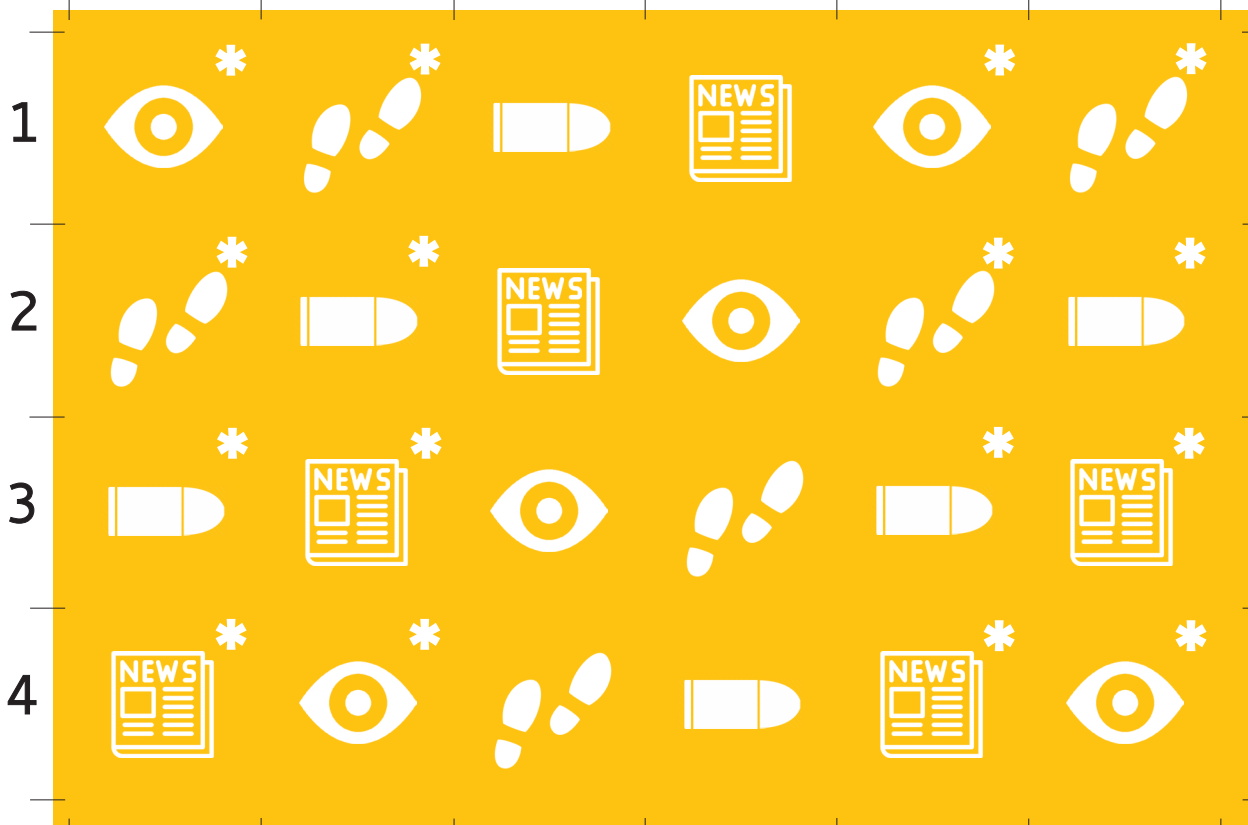


Investigation Dice

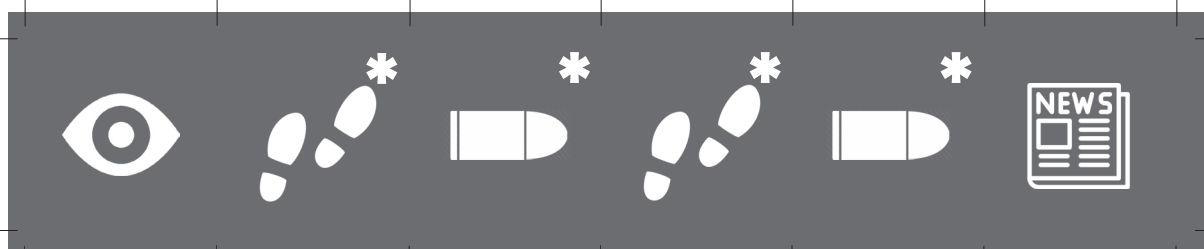


Dice sized for sticking on 1" cubes. Shrink as required.

Paperboy Die

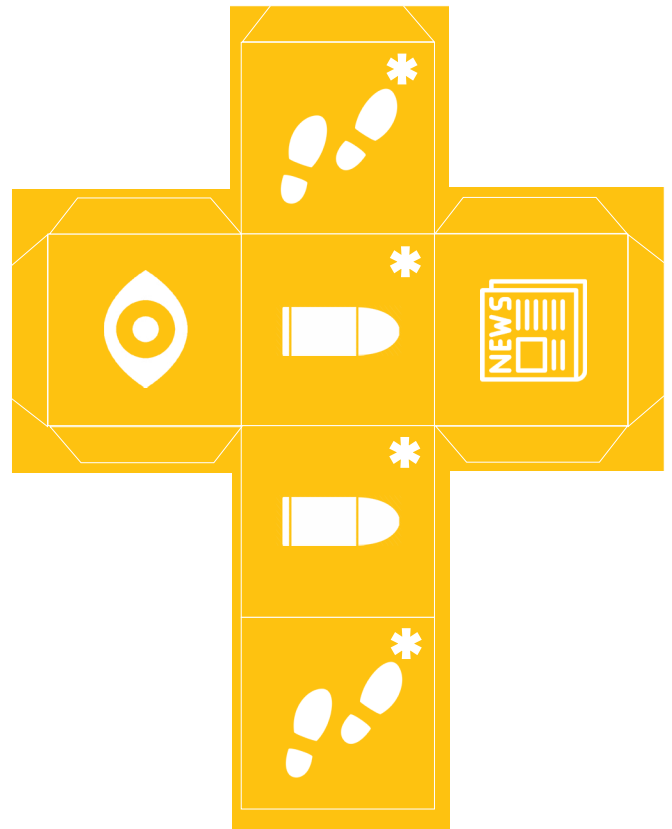
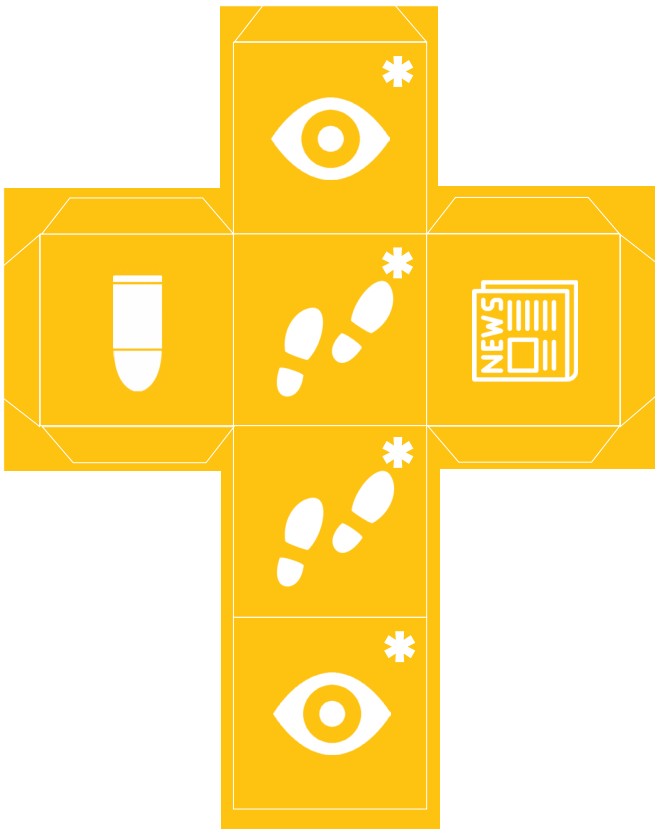


Underworld Connection Die

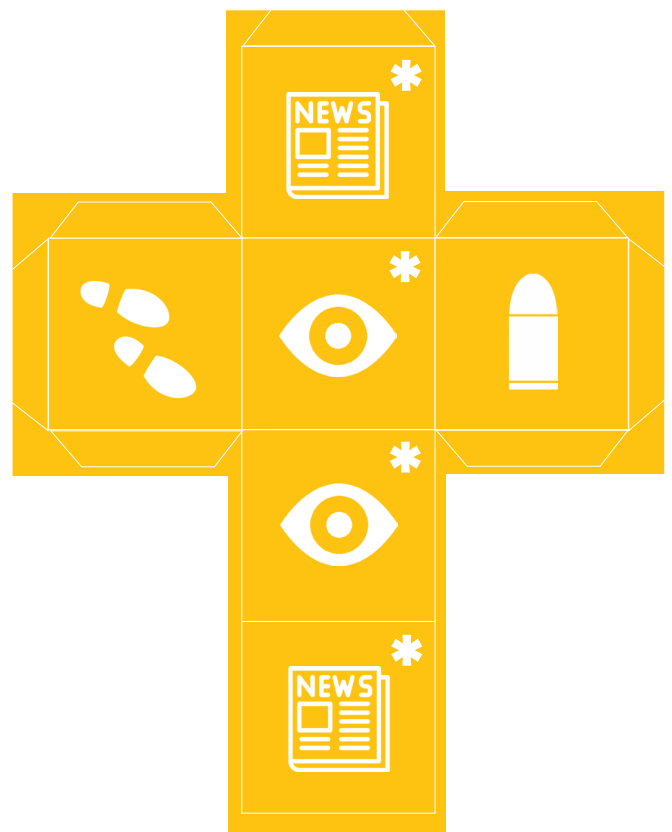


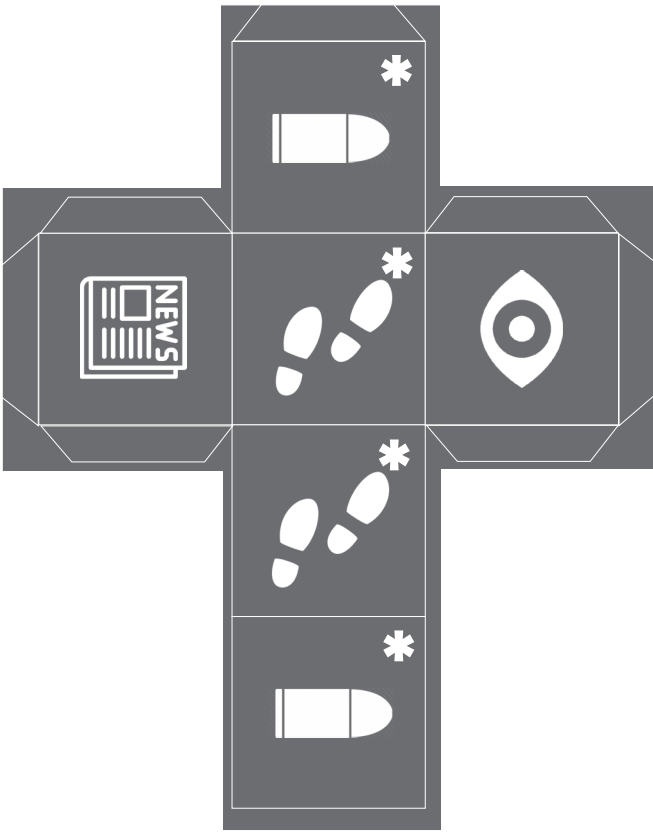
Sidekicks Die



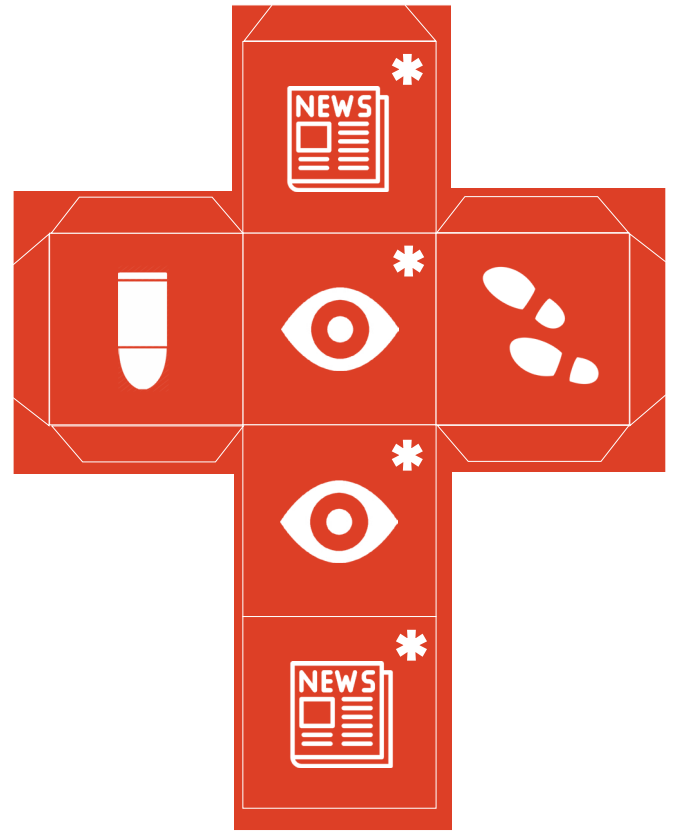


Investigation Dice



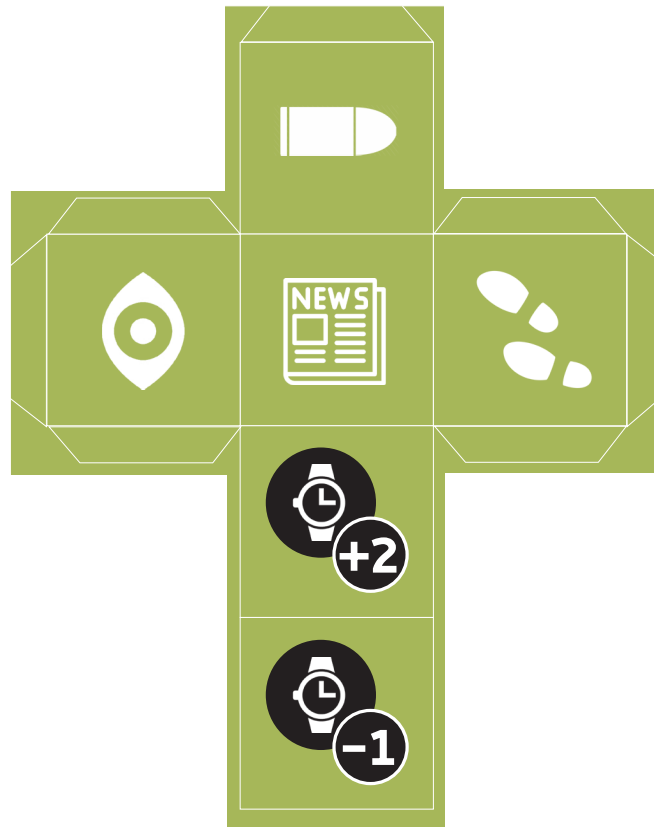


Underworld Connection Die



Paperboy Die

Sidekicks Die



Origami Paper Dice

Investigation Dice

Die 1						
Die 2						
Die 3						
Die 4						

Paperboy Die

Underworld Connection Die

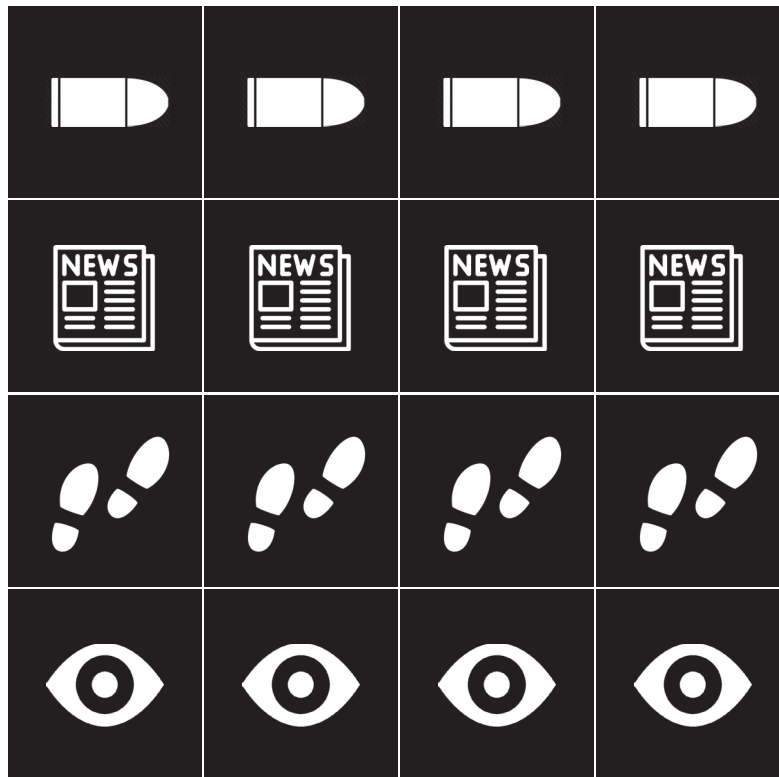
Sidekicks Die

For mapping Pulp Detective dice to standard dice, use: 4 Yellow dice, 1 Red, 1 Black or Grey, and 1 Green Die, and consult this chart for the proper Storyline icons.

When rolling Yellow Investigation dice during Phases 2 and 3 it is important to designate each die by its number: 1-4.

Chart of Icons for Standard Dice

Twist Markers for 1" square counters or 1" round counter punch



Fronts

Back

